

---

Version 1.13

(18.03.2016)

# Installation manual

## FISCON Pro

### Hands free kit

Article-ID        37564  
                         39857

#### Mercedes

A-Class (W169)  
B-Class (W245)  
C-Class (W203 after 04/2004)  
CLK-Class (W209)  
CLS-Class (W219)  
E-Class (W211 after 03/2003)  
GL-Class (X164)  
M-Class (W164)  
R-Class (W251)  
SLK-Class (R171)  
SL-Class (R230)  
Viano (W639)  
Vaneo  
Sprinter

(Suitable for head unit Audio 20, APS 50, Comand)

(Not suitable for Comand NTG 2.5)

---

## Content

|   |    |
|---|----|
| General advice .....  | 2  |
| Safety Instructions .....   | 3  |
| References of legal regulations for operation .....               | 3  |
| FISCON Pro Mercedes.....  | 4  |
| Scope of delivery article ID 37564 .....                          | 4  |
| Scope of delivery article ID 39857 .....                          | 4  |
| Suitable parts for your vehicle .....                             | 5  |
| Installation instruction .....                                    | 6  |
| Interface connection .....  | 10 |
| Additional installation for factory fitted hands free system..... | 12 |
| Coding for vehicles without factory fitted hands free kit .....   | 13 |
| Control elements .....  | 22 |
| Operation instruction .....                                       | 23 |
| Setup through head unit .....                                     | 29 |
| FAQ.....  | 30 |

---

## General advice

While developing this product, your personal safety combined with the best operating service, modern design and an up-to-date production technique was especially taken into account.

Unfortunately, despite the utmost care injuries and/or damages might occur due to improper installation and/or use.

Please read the attached instruction manual completely with great care and keep it!

All articles of our production line pass through a 100 % check - for your safety and security.

We reserve the right to carry out technical changes which serve the improvement at any time.

According to each article and purpose, it is sometimes necessary to check each country's legal regulations before installing and starting the unit.

In case of guarantee claims, the device has to be sent back to the seller in the original packaging with the attached bill of purchase and detailed defect's description. Please pay attention to the manufacturer's return

requirements (RMA). The legal warranty directions are valid.

The guarantee claim as well as the operating permission becomes invalid due to:

- a) unauthorized changes to the device or accessories which have not been approved or carried out by the manufacturer or its partners*
- b) opening the device's frame*
- c) device's repairs carried out by one's own*
- d) improper use / operation*
- e) brute force to the device (drop, wilful damage, accident etc.)*

During installation, please pay attention to all safety relevant and legal directions. The device has only to be installed by trained personnel or similarly qualified people.

**Please limit on installation or function problems the troubleshooting to 0.5 hours for mechanical and 1.0 hours for electronic works.**

To avoid unnecessary work and to save costs, please send us immediately via the contact form Kufatec (<http://www.kufatec.de/shop/de/infocenter/>) a request to our technical support.

Please quote the following necessarily:

- Vehicle Identification Number
- Part number of the retrofit kit
- Detailed description of problems
- Already conducted operations

## Safety Instructions

Installation requires special knowledge.

Do not install the unit yourself. For safe and reliable installation, consult a dealer having special knowledge.

- *Never use bolts or nuts from the car's safety devices for installation. If bolts or nuts from the steering wheel, brakes or other safety devices are used for installation of the unit, it may cause an accident.*
- *Use the unit with a DC 12V negative ground car. This unit cannot be used in large trucks which use a DC 24V battery. If it is used with a DC 24V battery, it may cause a fire or accident.*
- *Avoid installing the unit in following places: - Where it would hinder your safe driving. - Where it could damage the car's fittings.*
- *This unit is only for use in the following vehicles. Only connections described within this instruction guide are allowed or required to use for installation.*
- *For damage impact caused by faulty installation, unsuitable connections in appropriate vehicles Kufatec GmbH assumes no liability.*
- *We advise you that these units process data out of the MOST - protocol from the vehicle. As the supplier of this device we don't know the overall system you are working with. If our device causes damage due to other changes made by to the vehicle Kufatec GmbH assumes no liability.*
- *Kufatec GmbH supplier do not guaranty the use of the product for changing's within a new vehicle series.*
- *If the car manufacturer's don't agree with the installation of our device by reason of warranty the Kufatec GmbH assumes no liability. Please check conditions and warranty before you begin the installation.*
- *Kufatec GmbH supplier reserves the right to change the device specifications without notice.*

**NOTE:** The road traffic has to have your full attention.

Telephone operations should only be done by suitable traffic and weather situations. The volume need to be set that you are still able to realise acoustic warn signals (Police, fire brigade).

- *Errors and changes excepted.*

## References of legal regulations for operation

Only use this unit in the intended domain.

If you use it in a foreign domain, if the unit is not installed properly, or if the unit will be reconstructed, the guarantee will expire.

## FISCON Pro Mercedes

- Easy installation, No cutting of wires necessary
- Factory fitted functions do not get affected at all
- **OEM-menu driven** operation by head unit, Multifunctional steering wheel (if available)
- **Display** of telephone phonebook within the **DIS** (if activated)
- **Voice output** through the vehicle speakers - no installation of additional speakers necessary
- Use of the following telephone **operations**:
  - Access to the **phonebook, call lists** (depends on mobile phone)
  - **Direct dial** of telephone numbers
  - **A2DP Audiostreaming** in order to transfer music to the Infotainment system of the vehicle – Only for vehicles without factory fitted CD-changer – **A2DP** function has to be activated before using
  - Access to **text messages** (depends on mobile phone) – Inbox, Outbox, Draft
  - Writing + Sending text messages by using the operation panel of the head unit
  - Unlimited software **updates**
  - Volume control

## Scope of delivery article ID 37564

Bluetooth Interface  
Wiring  
Housing  
Fiber Optic transfer connector  
Microphone

## Scope of delivery article ID 39857

Bluetooth Interface  
Wiring  
Microphone

**NOTE:** Before installing the FISCON system you need to check whether the car is retrofitted with an interface not developed by Kufatec GmbH. In case a non-Kufatec interface is fitted we are not able to guaranty the absolute operation of the hands free system. You may need to remove the non-Kufatec interface.

Hereby, Kufatec GmbH & Co. KG declares that the Device KUFATEC FISCON are in compliance with the essential requirements and other relevant provisions of Directive 1999/5/EG

The declaration of conformity can be found at the following address: [www.kufatec.de/ce](http://www.kufatec.de/ce)

## Suitable parts for your vehicle

Depending on the vehicle equipment you will only need certain parts of the scope of delivery. Microphone, interface and wiring are always needed.

### For vehicles with existing fiber optical looms on the head unit

In case of vehicles with **existing fiber optical looms** on the back of the head unit you will need the following parts for fitting:



Fig. 1

### For vehicles without fiber optical looms on the head unit

In case of vehicles **without fiber optical looms** on the back of the head unit you will need the following parts for fitting:



Fig. 2

### For vehicles with factory fitted hands free system

In case of vehicles **with factory fitted hands free system** you will need the following part in addition. This item is not part of the delivery.

Please order from Kufatec web site - [www.kufatec.de](http://www.kufatec.de) – item number 36782



**NOTE: Fiber optical looms MUST NOT BE CRACKED! The recommended radius for fitting is 40 mm.**

In case of incorrect fitting we are not able to guaranty the absolute operation of the hands free system.

## Installation instruction

### W211, W219

Remove the gearshift (Fig. 6-7). Remove the cover of the center console by unlocking the hooks (Fig. 7). Remove the ashtray (Fig. 8).



Fig. 6



Fig. 7



Fig. 8

Loosen the necessary screws of the climate control (Fig. 9). Loosen the necessary screws of the head unit (Fig. 11).

**NOTE:** These screws has to be screwed out until the far end. Remove the head unit.



Fig. 9



Fig. 10



Fig. 11

### W164, X164

Remove the cover of the climate control by gently pulling (Fig. 12). Loosen the necessary screws of the head unit (Fig. 13). Move the splint downwards (Fig. 14). Remove the head unit.



Fig. 12

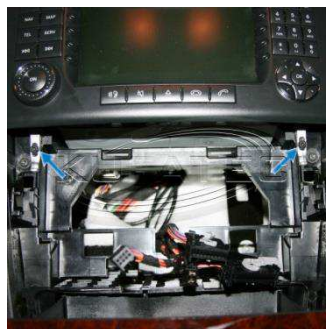


Fig. 13



Fig. 14

## W169, W245

The vent has to be removed. Hook into the wholes (Fig. 16) with a suitable tool. Pull the vent gently.



Fig. 15



Fig. 16



Fig. 17

Loosen the upper screws of the radio (Fig. 18). Remove gently the cover of the climate control by using a suitable tool (Fig. 19). Loosen the lower screws of the radio (Fig. 18). Remove the radio.



Fig. 18



Fig. 19



Fig. 20

## W251

Remove gently the cover of the climate control by using a suitable tool (Fig. 21). Loosen the necessary screws of the head unit (Fig. 22). Move the splint downwards (Fig. 23). Remove the head unit.



Fig. 21

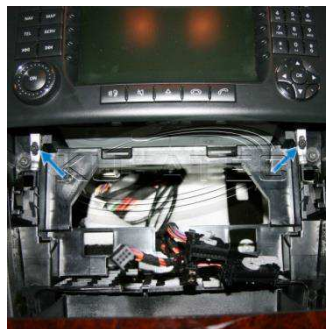


Fig. 22



Fig. 23



## W203, W209

**W203** - Remove gently the cover of the vent by using a suitable tool (Fig. 24). Move the adjustment wheel downwards and the vent upwards (Fig. 25).



Fig. 24

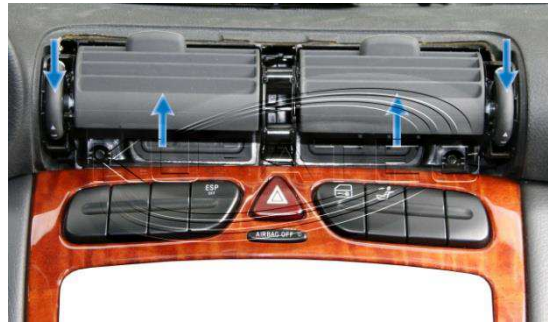


Fig. 25

Loosen the necessary screws underneath the vent (Fig. 26). Remove the vent by moving the fastener on the top downwards (Fig. 27).



Fig. 26

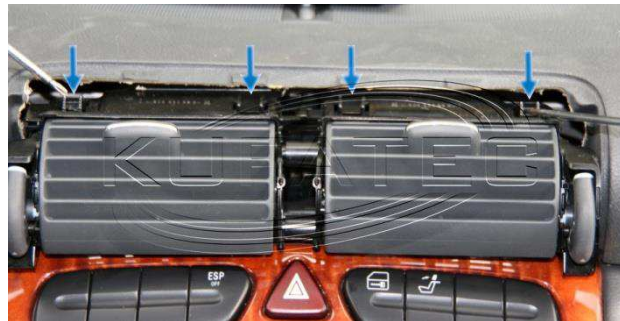


Fig. 27

Loosen the necessary screws of the upper cover (Fig. 28).

**W209** - Remove gently the cover shown on Fig. 29.

Remove the cover of the center console by pulling (Fig. 30).



Fig. 28



Fig. 29



Fig. 30

Unlock the hooks of the ashtray (Fig. 31). Remove the ashtray. Loosen the necessary screws of the climate control (Fig. 32). Loosen the necessary screws of the head unit (Fig. 33). Remove the head unit.



Fig. 31



Fig. 32



Fig. 33

## Microphone

Loosen the necessary screws of the cover underneath the steering wheel as well as the trim aside (Fig. 34). Remove the cover of the A-column using suitable tools (in order to avoid damages) (Fig. 35). Start wiring the loom for the microphone towards the interior light (Fig. 35). Angle the microphone towards the driver position (Fig. 36).



Fig. 34



Fig. 35



Fig. 36

**NOTE:** Does the vehicle have airbags fitted along the A-column it is essential to wire the loom for the microphone **BEHIND** the airbag. Wire the loom without putting tension on it. Mount the loom without affecting the airbag in its functionality.

**NOTE:** Regarding to the voice quality do not fit the microphone covered inside the interior light.

## Interface connection

### For vehicles with existing fiber optical looms on the head unit

Disconnect the Quadlock (Fig. 37) respectively the MOST connector (Fig. 38) of the radio.

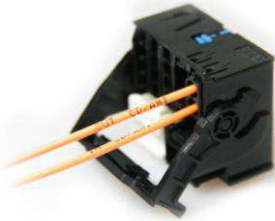


Fig. 37



Fig. 38

Remove the original fiber optical cable (Fig. 39). Put the delivered housing to the just removed (original) fiber optical connector (Fig. 40).

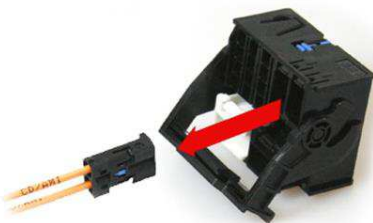


Fig. 39

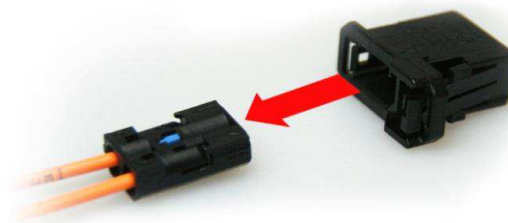


Fig. 40

Join the original fiber optical connector to the female connector of the delivered loom (Fig. 41, 42)

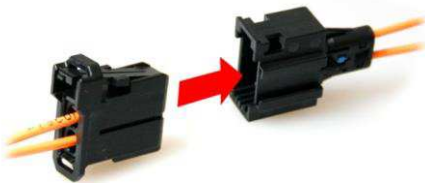


Fig. 41



Fig. 42

Put the optical connector of the delivered loom to the Quadlock respectively MOST connector (Fig. 43).

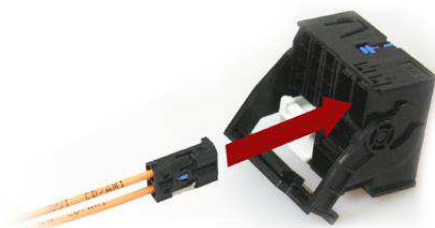


Fig. 43

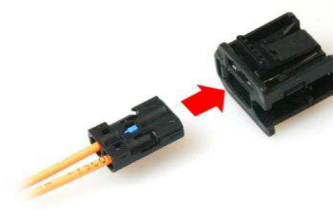


Fig. 44

Join the 18-pole connector as well as the fiber optical to the telephone interface (Fig. 45) (remove dummy plug of the interface). Figure 46 is showing the final connection of the telephone interface.

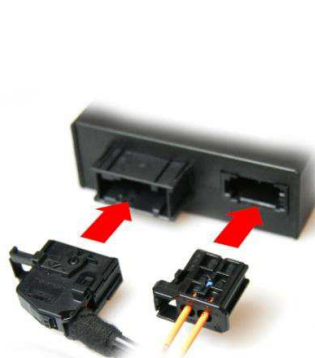


Fig. 45



Fig. 46

## For vehicles without existing fiber optical looms on the head unit

Join the fiber optical connector of the delivered loom to the Quadlock connector of the radio (Fig. 47). Connect the delivered fiber optical transfer connector (bridge) to the female connector of the delivered wiring (Fig. 48).

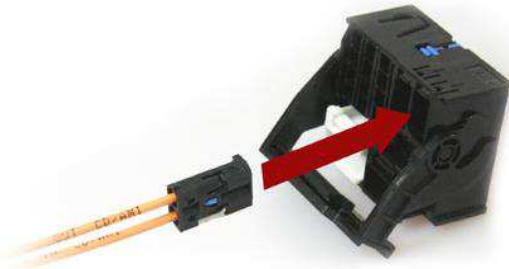


Fig. 47

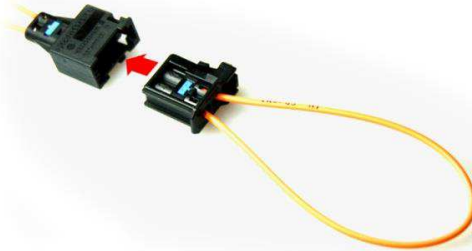


Fig. 48

Join the 18-pole connector as well as the fiber optical to the telephone interface (Fig. 49). Figure 50 is showing the final connection of the telephone interface.

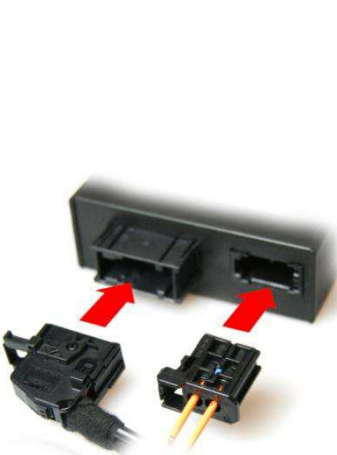


Fig. 49

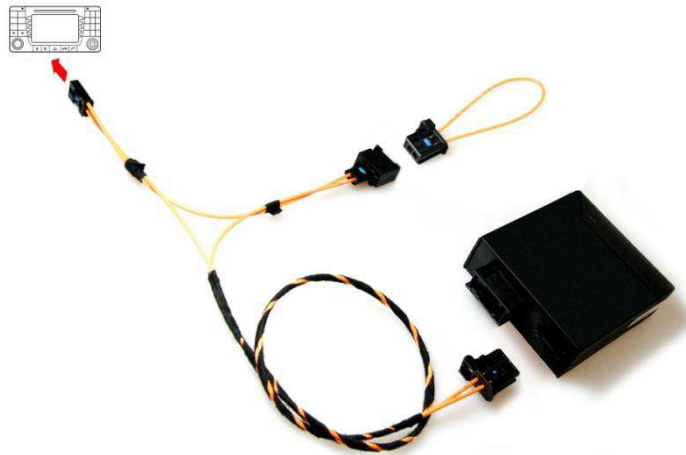


Fig. 50

## Microphone/ Power supply

Connect the female jack of the harness plug & play to the microphone (Fig. 51).

With the connection of 2 new wires you will complete the fitting of the power supply. Please see Fig 52. In order to achieve a proper connection we recommend both crimping and soldering the new wires.

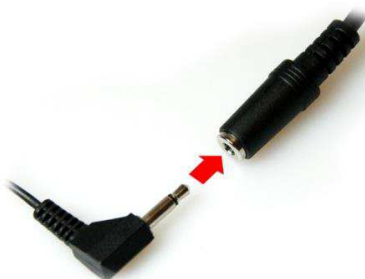


Fig. 51

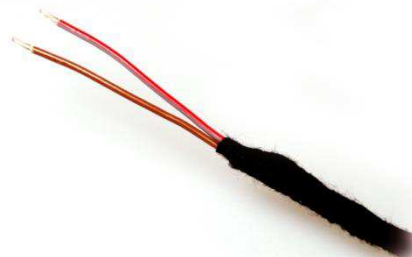


Fig. 52

**BROWN – GROUND**  
**RED – STEADY PLUS**

## Additional installation for factory fitted hands free system

### Only for vehicles with factory fitted hands free system

The original telephone control unit has to be removed. Depending on the vehicle the telephone control unit is fitted on different locations.

#### Fitting Location SLK- R 171, E-W211

Remove the cover of the trunk. Loosen the necessary screws of the fastening plate (Fig. 53). Disconnect the original telephone control unit (Fig. 54).



Fig. 53



Fig. 54

#### Fitting Location W169

Vehicle floor underneath the driver seat. Remove the driver seat – put the carpet away – Remove the cover of the ventilation duct. The telephone interface will appear.

Disconnect the connector shown on figure 55. Leave it without functionality within the vehicle.

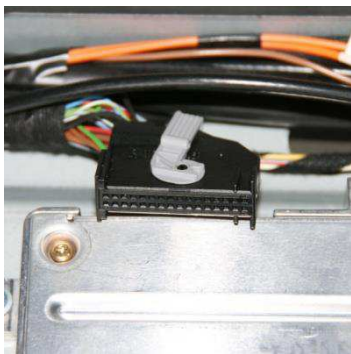


Fig. 55



Fig. 56

Join the original fiber optical connector to the female optical bridge (Fig. 56 - 58 / item number 36782 / [www.kufatec.de](http://www.kufatec.de)).

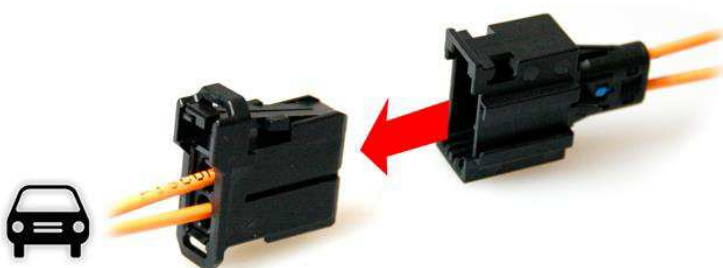


Fig. 57

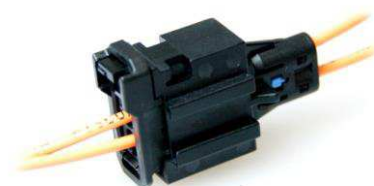


Fig. 58

# Coding for vehicles without factory fitted hands free kit

## Activation Driver information system



Fig. 03

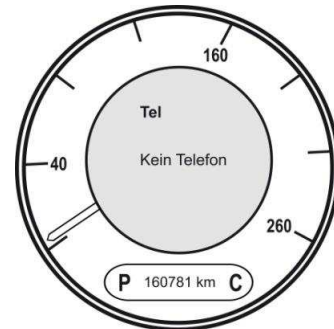


Fig. 04

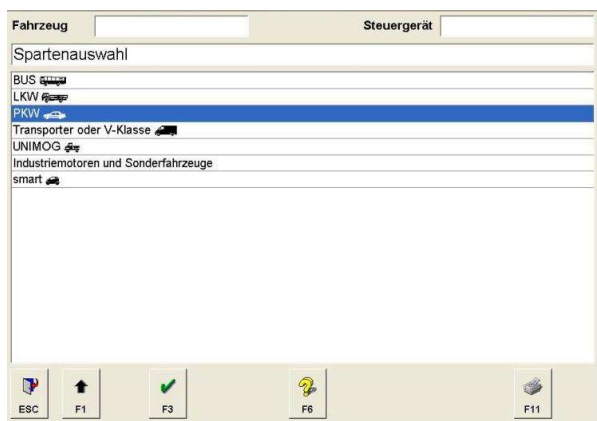
Please scroll the menu button (Fig. 03) around all functions. In case the menu „**NO PHONE**“ will appear (Fig. 04) the driver information system is already activated.

In case the menu will **not** appear the instrument cluster needs to be activated by using diagnostic software. Please contact a Mercedes dealer.

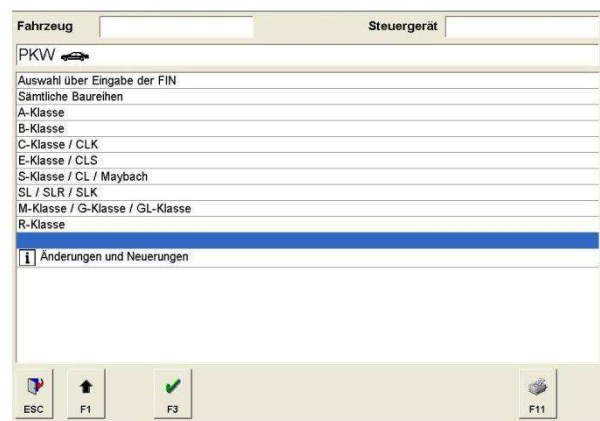
Depending on the vehicle **2 different processes of activation are possible.**

### Coding process 1

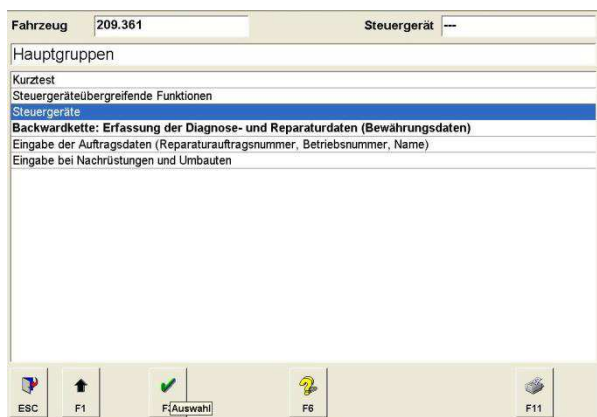
**Suitable for the following vehicles:** W169, W245, R171, W164, X164, W251



Car type →



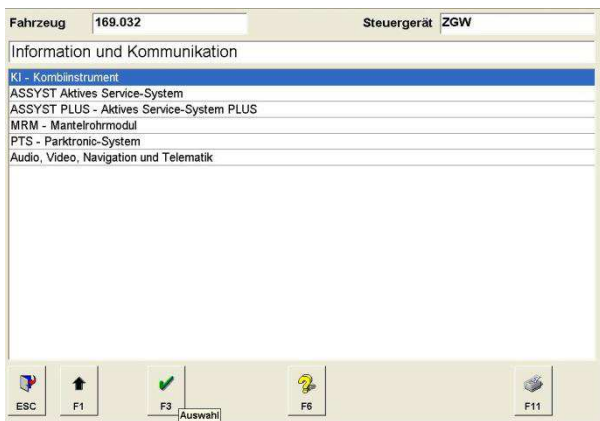
Vehicle selection →



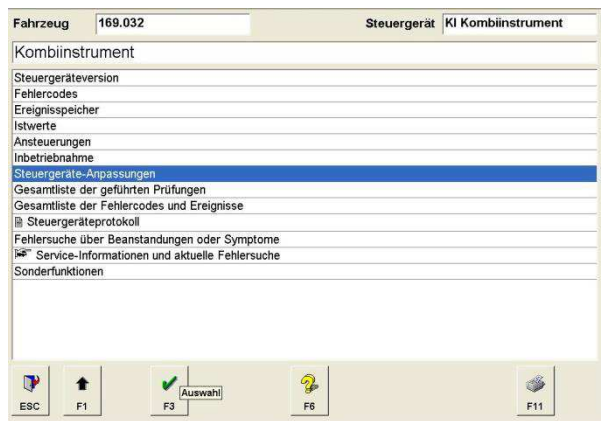
Control units →



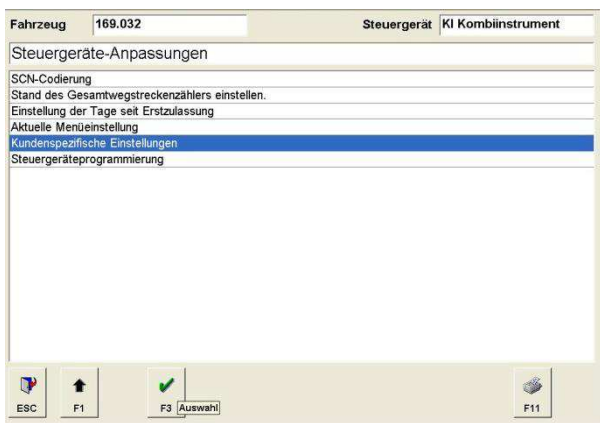
Information and Communication →



Instrument cluster



Control unit adaptations



Customer specific settings



iPod



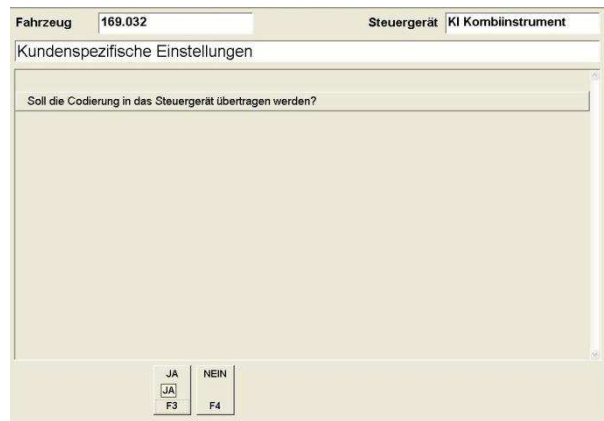
Not possible - possible



F3



Download changes - F5

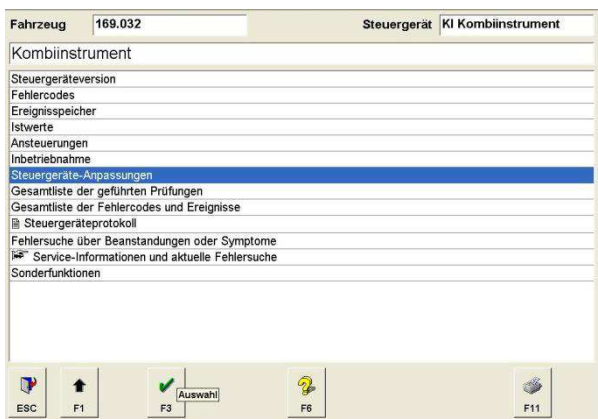


F3

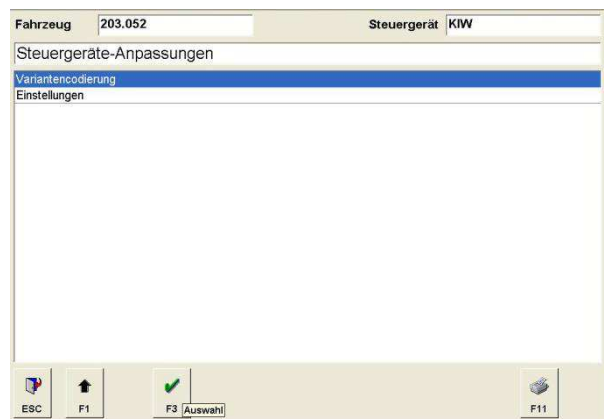


Finish

**Coding process 2:  
Identical steps of process 1 until „Control unit adaption“  
Suitable for the following vehicles: W203, W209, W211, W219, R230**



Control unit adaption



Variant coding





Fahrzeug 203.052 Steuergerät KIW

Variantencodierung

- Ländervarietencodierung
- Sonderausstattungen**
- Kombinstrumentspezifische Codierungen
- Konfiguration der Menüpunkte im Multifunktionsdisplay
- Schlüsselabhängiges Speichern
- Motortyp
- Tankgeber

ESC F1 F3 Auswahl F11

Special equipment →

Fahrzeug 203.052 Steuergerät KIW

Sonderausstattungen

| Codierung                           | Aktueller Zustand                               |
|-------------------------------------|---|
| Memory                              | NICHT VORHANDEN                                 |
| <b>Telefon/iPod</b>                 | <b>NICHT VORHANDEN</b>                          |
| Navigationssystem                   | Nicht codiert                                   |
| Spiegeleinklappung                  | NICHT VORHANDEN                                 |
| Anhängerüberwachung                 | NICHT VORHANDEN                                 |
| Standheizung                        | NICHT VORHANDEN                                 |
| Audio                               | Nicht codiert                                   |
| Kofferraumdeckel-Öffnungsbegrenzung | NICHT VORHANDEN                                 |
| Tempomat                            | M272, OM646, Neues Automatikgetriebe (Code 427) |
| DTR Distronic                       | Nicht codiert                                   |
| Taxi-Paket                          | NICHT VORHANDEN                                 |

F1 F3 Codierung lesen und gegebenenfalls ändern. F11

Telephone/ iPod →

Fahrzeug 203.052 Steuergerät KIW

Telefon/iPod

Telefon/iPod NICHT VORHANDEN

Nicht codiert

NICHT VORHANDEN

**VORHANDEN**

Hinweise zur Codierung:  
 Wenn die Sonderausstattung 'TEL Telefon' vorhanden ist, muss die Codierung auf 'VORHANDEN' eingestellt werden.  
 Wenn die Sonderausstattung 'iPod' vorhanden ist, muss die Codierung auf 'VORHANDEN' eingestellt werden.

ESC F1 F3 F11

Not possible - possible F3 →

Fahrzeug 203.052 Steuergerät KIW

Sonderausstattungen

| Codierung                           | Aktueller Zustand                               |
|-------------------------------------|---|
| Memory                              | NICHT VORHANDEN                                 |
| <b>Telefon/iPod</b>                 | <b>VORHANDEN</b>                                |
| Navigationssystem                   | Nicht codiert                                   |
| Spiegeleinklappung                  | NICHT VORHANDEN                                 |
| Anhängerüberwachung                 | NICHT VORHANDEN                                 |
| Standheizung                        | NICHT VORHANDEN                                 |
| Audio                               | Nicht codiert                                   |
| Kofferraumdeckel-Öffnungsbegrenzung | NICHT VORHANDEN                                 |
| Tempomat                            | M272, OM646, Neues Automatikgetriebe (Code 427) |
| DTR Distronic                       | Nicht codiert                                   |
| Taxi-Paket                          | NICHT VORHANDEN                                 |

F1 F3 F5 Schreiben der Codierungen F11

F5 →

Fahrzeug 169.032 Steuergerät KI Kombiinstrument

Kundenspezifische Einstellungen

Soll die Codierung in das Steuergerät übertragen werden?

JA NEIN

F3 F4

Download changes – F3 →

Fahrzeug 169.032 Steuergerät KI Kombiinstrument

Kundenspezifische Einstellungen

Die Codierung wurde durchgeführt.

F2

Coding completed

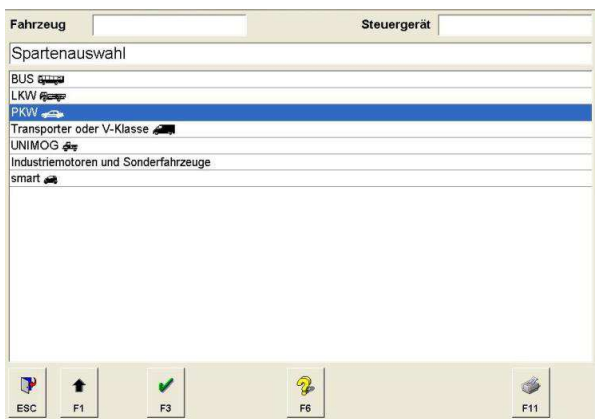
## Activation Telephone system

**ATTENTION:** The activation can not be done in advance. The installation has to be finished before starting the activation process.

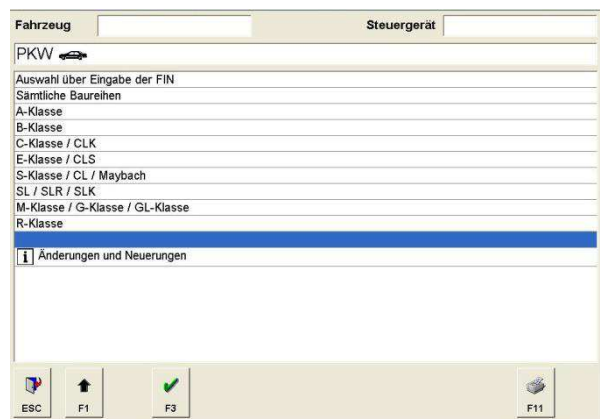
In case after installation the note „**No Telephone not available**“ (Fig. 5) will appear the telephone function needs to be activated by using diagnostic software.



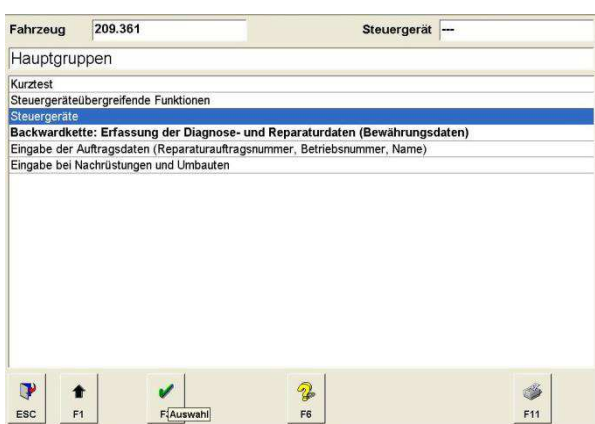
Fig. 05



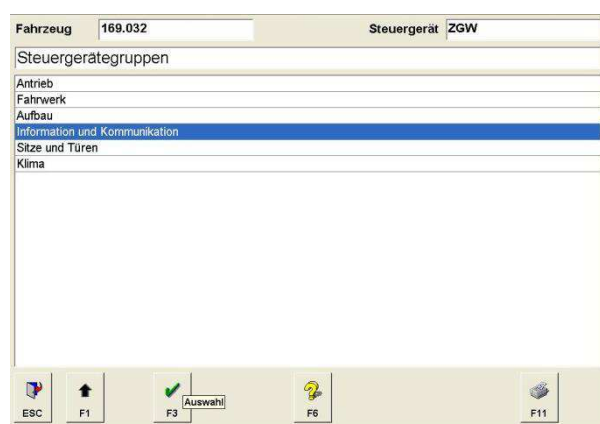
PKW →



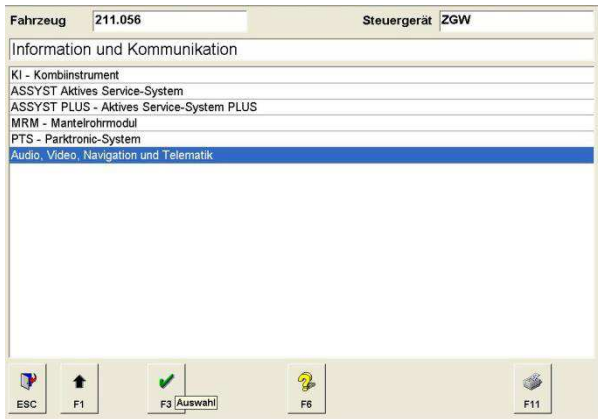
vehicle selection →



Control unit →



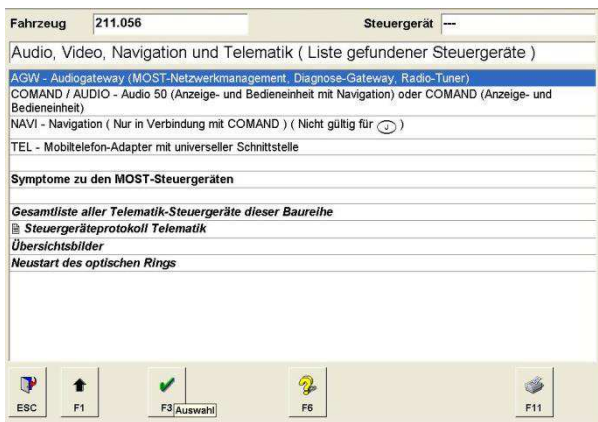
Information and Communication →



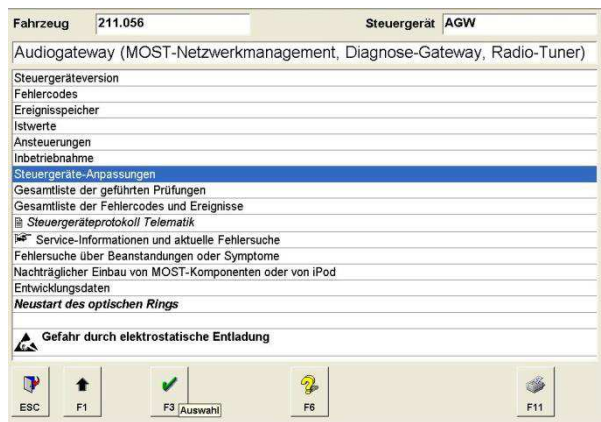
Audio, Video, Navigation and Telematics ➡



This note can appear – Continue with F2 ➡



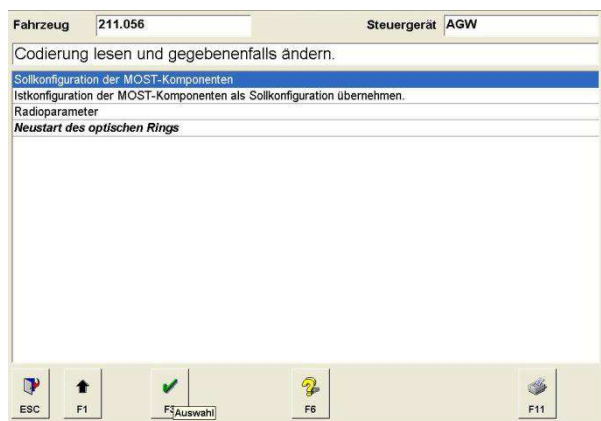
AGW ➡



Control unit adaptations ➡



Read coding/ Change coding ➡



target configuration of MOST components ➡

The following screen will be displayed – **Starting situation**

| Fahrzeug 211.056 Steuergerät AGW       |  |
|--|--|
| Sollkonfiguration der MOST-Komponenten |  |
|  | Codierung                                  |
| MOST-Master                            | Audiogateway oder Audio 20 mit CD-Laufwerk |
| Komponente 1                           | Navigationsrechner                         |
| Komponente 2                           | COMAND oder AUDIO                          |
| Komponente 3                           | Frei                                       |
| Komponente 4                           | Frei                                       |
| Komponente 5                           | Frei                                       |
| Komponente 6                           | Frei                                       |
| Komponente 7                           | Frei                                       |
| Komponente 8                           | Frei                                       |
| Komponente 9                           | Frei                                       |
| Komponente 10                          | Frei                                       |
| Komponente 11                          | Frei                                       |
| Komponente 12                          | Frei                                       |
| Komponente 13                          | Frei                                       |
| Komponente 14                          | Frei                                       |
| Komponente 15                          | Frei                                       |

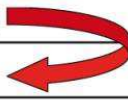
| Fahrzeug 211.056 Steuergerät AGW       |  |
|--|--|
| Sollkonfiguration der MOST-Komponenten |  |
|  | Codierung                                  |
| MOST-Master                            | Audiogateway oder Audio 20 mit CD-Laufwerk |
| Komponente 1                           | Frei                                       |
| Komponente 2                           | Frei                                       |
| Komponente 3                           | Frei                                       |
| Komponente 4                           | Frei                                       |
| Komponente 5                           | Frei                                       |
| Komponente 6                           | Frei                                       |
| Komponente 7                           | Frei                                       |
| Komponente 8                           | Frei                                       |
| Komponente 9                           | Frei                                       |
| Komponente 10                          | Frei                                       |
| Komponente 11                          | Frei                                       |
| Komponente 12                          | Frei                                       |
| Komponente 13                          | Frei                                       |
| Komponente 14                          | Frei                                       |
| Komponente 15                          | Frei                                       |

OR (e.g.)

NOTE: The displayed components (1-15) can vary in quantity depending on the vehicle equipment (see above).


- Component „COMAND or AUDIO“ needs to be moved to the next position below.

|              |  |
|--------------|--|
| MOST-Master  | Audiogateway oder Audio 20 mit CD-Laufwerk |
| Komponente 1 | Navigationsrechner                         |
| Komponente 2 | COMAND oder AUDIO                          |
| Komponente 3 | Frei                                       |
| Komponente 4 | Frei                                       |
| Komponente 5 | Frei                                       |

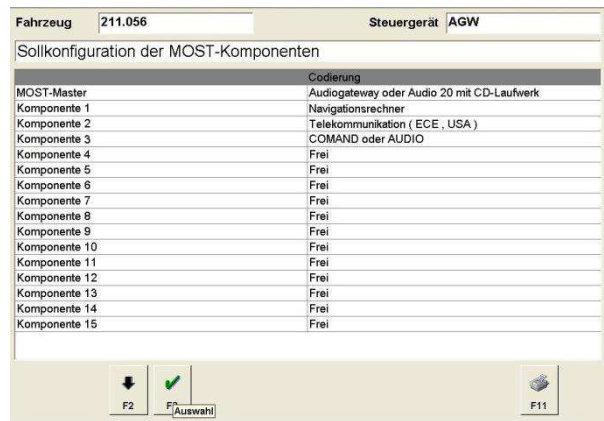


- Component „Telecommunication“ needs to be added **BEFORE** „Comand or Audio“.

|              |  |
|--------------|--|
| MOST-Master  | Audiogateway oder Audio 20 mit CD-Laufwerk |
| Komponente 1 | Navigationsrechner                         |
| Komponente 2 | Telekommunikation (ECE, USA)               |
| Komponente 3 | COMAND oder AUDIO                          |
| Komponente 4 | Frei                                       |
| Komponente 5 | Frei                                       |

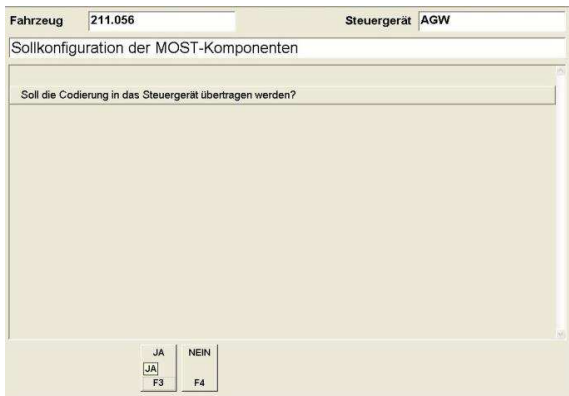


NOTE: In case no MOST components will be displayed (1-15) „Telecommunication“ needs to be added to the very next possible position.



Telecommunication (ECE, USA) - F3 →

Selecting - F3 →



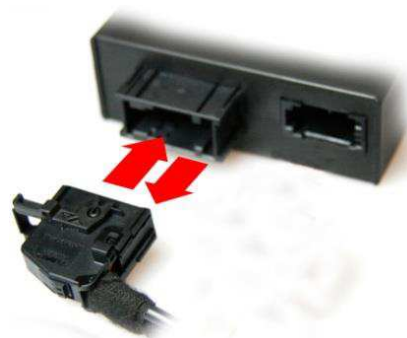
Download coding →



Coding completed – F2



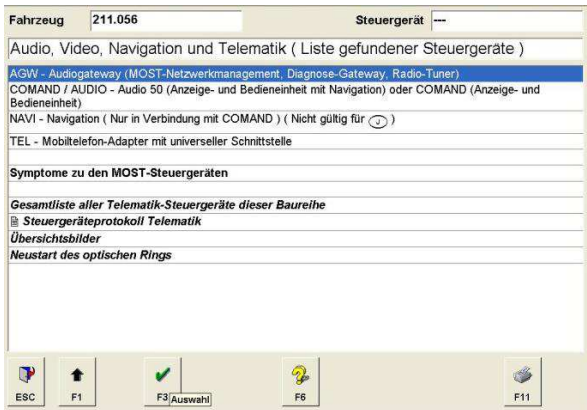
Restart optical circle



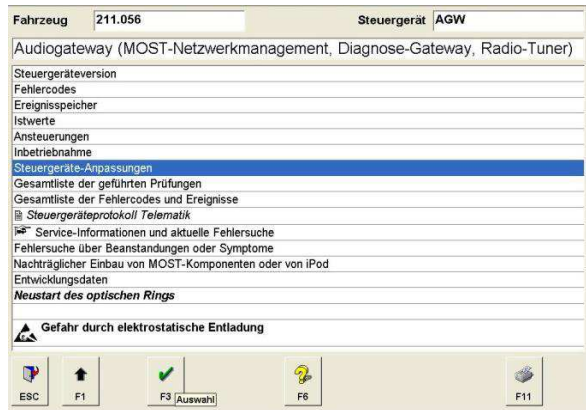
After restarting the optical circle the **Power supply** of the interface has to be **disconnected** and connected again.

**NOTE:** In case the interface is already fitted the fuse of the source has to be removed for a short time were the power supply of the interface is connected to (Red loom). Put the fuse back in again.

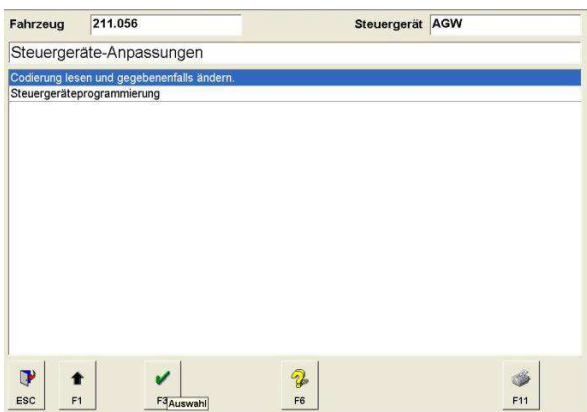
➡ Proceed identical steps until „AGW“ ➡



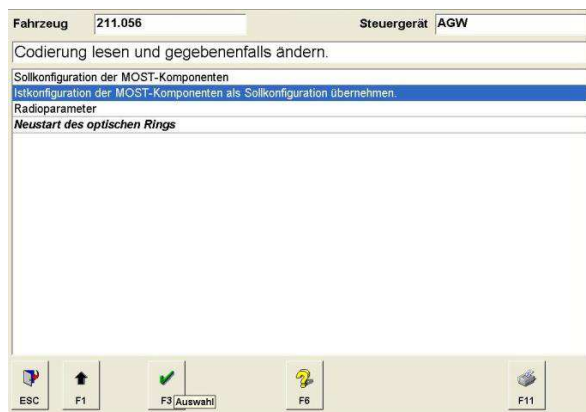
AGW selection again



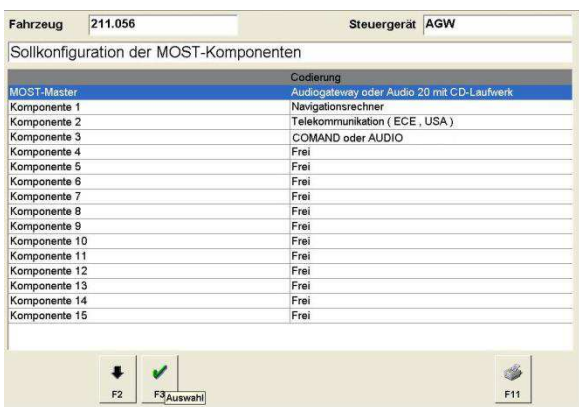
Control unit adptions



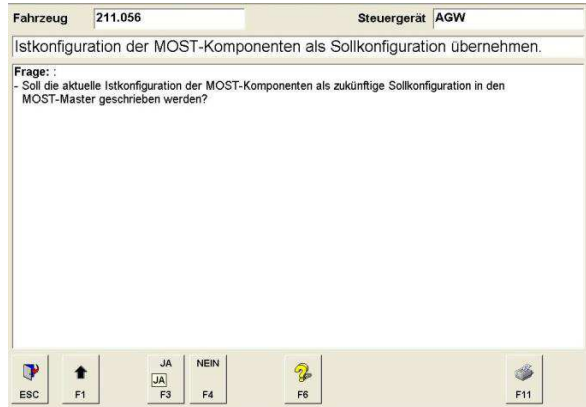
Read coding/ Change coding



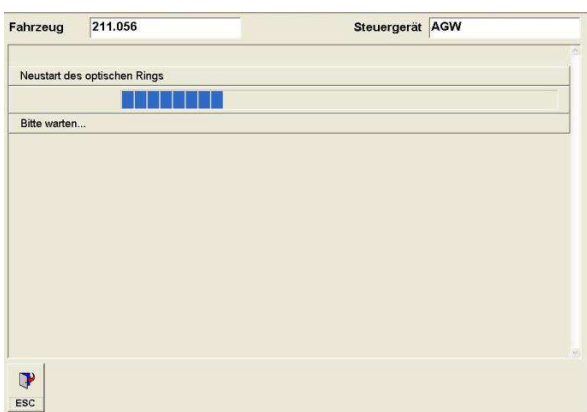
carry over actual config. to target config.



F3



Confirm current configuration



Restart optical circle

## Control elements

### Multifunctional steering wheel

By pushing the **MENU** button ① you will reach the phonebook (Fig. 59).

By using the **ARROW** buttons ② you will select the single entries. By pushing the **ARROW** buttons ② for about 3 Sec. the menu is switching to the next initial letter within the alphabet. Push the **PHONE** button ③ in order to place a call. Push the **HANG UP** button in order to cancel a call. With the **PLUS - MINUS** buttons you can control the volume ④.



Fig. 59

### Instrument cluster

The phone book will also displayed within the instrument cluster (if activated) (Fig. 60)

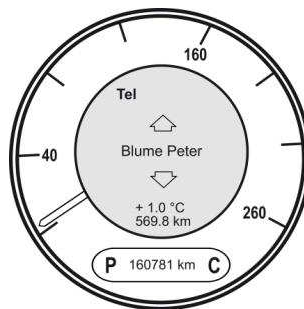


Fig. 60

### Head unit

**OEM-menu driven** operation by using the operating panels of the head unit (Fig. 61).

After pressing the button **TEL** ① the system can be controlled as usual by using the **control keys** ②, **keypad** ③ and **navigation buttons** ④. With the **phone buttons** ⑤ you can accept and ignore calls directly.

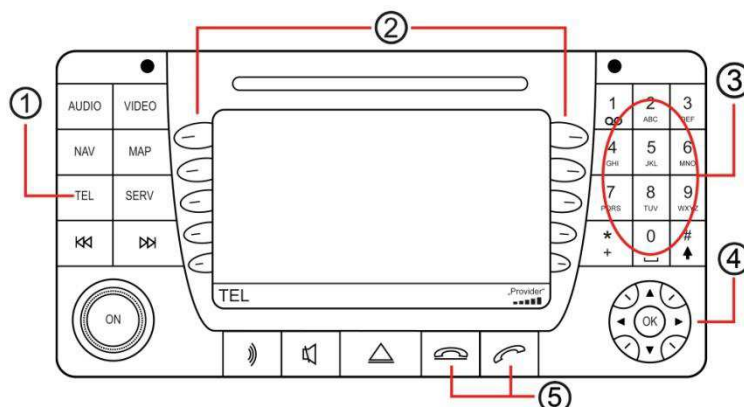


Fig. 61

## Operation instruction

The following operating instruction is valid for head unit Comand (certain variations possible in consequence of original operating).

In case of no factory fitted hands free Fig. 62 will appear by pressing the **TEL** button. As soon as the installation and coding has been finished and the interface is connected the screen will display fig. 63.



Fig. 62



Fig. 63

## Pairing

1. Press the **TEL** button on the head unit
2. Make sure the Bluetooth feature is turned on
3. Start the pairing procedure on your mobile phone
4. When prompted for a passkey, enter **1234** on your mobile phone

Once pairing is complete, you should see Fig. 64. You will see the network provider's name as well as the coverage if supported from mobile phone.

You may pair up to **5** different **mobile phones**.

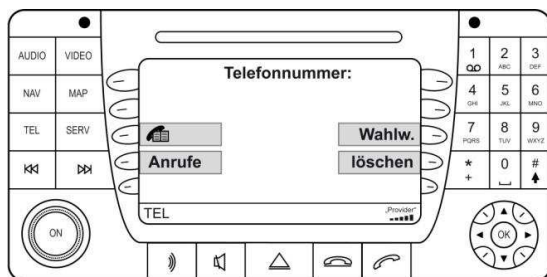


Fig. 64

**NOTE:** The bluetooth connection will stay until the connection will be cancelled manually as well as by locking the vehicle.



## Bluetooth device list

In case of pairing an additional mobile phone (5 mobiles already listed) at least one mobile has to be deleted of the bluetooth device list

Press the buttons **SERV > BLUETOOTH** (Fig. 65-66).

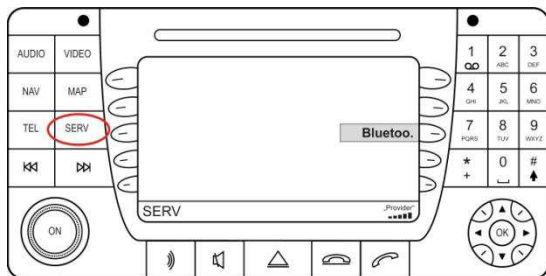


Fig. 65

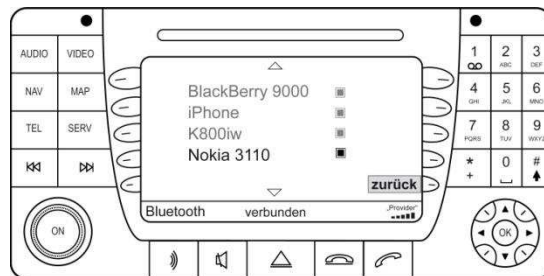


Fig. 66

Select the mobile phone you want to delete and press **OK**. Confirm with **YES** (Fig. 67).



Fig. 67

## Factory settings

By pushing the **TEL** button about **8 Sec.** the factory settings will be restored (Fig. 68).

**NOTE:** In case of radio **Audio 20** the last stored mobile phone has to be paired up before pushing the TEL button.

**NOTE:** After reset please wait another **2 minutes** before connecting the mobile phone again.

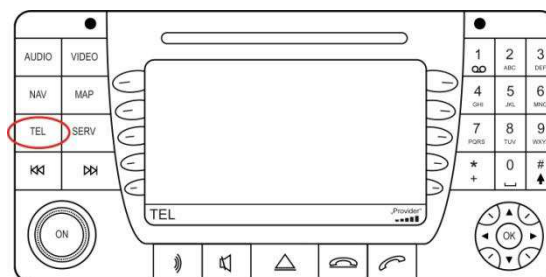


Fig. 68

## Redialling

Press **DIALED** (Fig. 69). After that you do have access to dialed, missed, accepted calls. Select an entry for placing a call (Fig. 70).

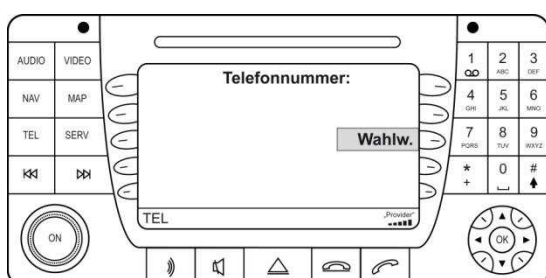


Fig. 69



Fig. 70

## Phone book

**NOTE:** The mobile phone must support phone book sync via Bluetooth to use this feature. The phonebook feature is limited to 1000 phonebook entries (sub-entries included). Phonebooks that have a large number of entries can take quite a long time to synchronise. Please avoid cancellations during synchronisation.

Press the **PHONE BOOK** button  (Fig. 71)

Select a phone number and press **OK** for placing a call (Fig. 72).

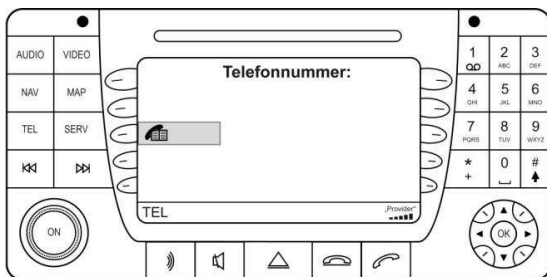


Fig. 71

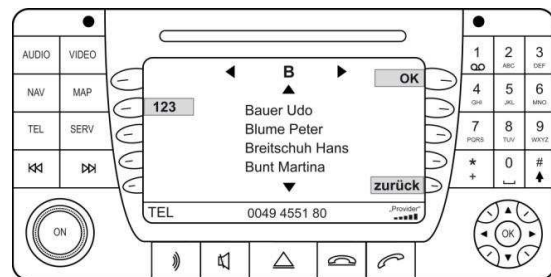


Fig. 72

## Call lists

Press the buttons **RECVD > DIALED/ RECEIVED CALLS / MISSED CALLS**

Select a phone number and press **OK** for placing a call (Fig. 73-74).

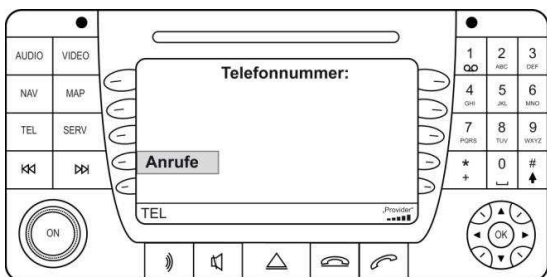


Fig. 73

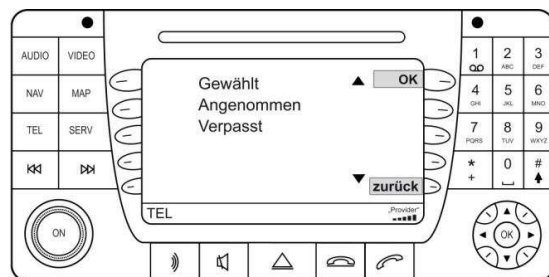


Fig. 74

**NOTE:** The mobile phone must support call list sync to use this feature.

## Keypad


Entering a telephone number by using the key panel. Press the button **OK** .



Fig. 75



Fig. 76

## Incoming calls

An incoming call will activate the mute operation. A ring tone will be generated. The name of the caller (depends on mobile) will be displayed. In case the caller is not stored by name the number will be displayed.

Press the buttons **ANSWER / IGNORE**.



Fig. 77

## A2DP Audiostreaming

**NOTE:** The **A2DP** function has to be **activated** before using.

The mobile phone must support A2DP sync via Bluetooth to use this feature.

Only for vehicles without factory fitted CD-Changer.

## A2DP Activation

Please complete the following process:


1. Pair up your Bluetooth phone with the hands free as usual
2. Press the **TEL** button on the head unit
3. Enter the following code: **258224001**
4. After entering the code please press **DIAL**  (Fig. 79)



Fig. 78



Fig. 79

**NOTE:** The call will be answered with "The number does not exist" but the setup has been completed.

After activation  **Vehicle system needs to shut down**

**NOTE:** As soon as the display of the instrument cluster disappears the vehicle system shut down.

 **Restart the radio**

In case of successful activation the CD-Changer (CDC) will be displayed after selecting **AUDIO** button (Fig. 80). Operation by using the CD-changer menu. Press the buttons **AUDIO > CDC**.

By using the menu **START – STOP – FORWARD – BACK** the music files stored on the mobile can be selected. (Fig. 81).

**NOTE:** The mobile phone must support A2DP sync via Bluetooth to use this feature. In some cases the mobile phone does not support the operation.

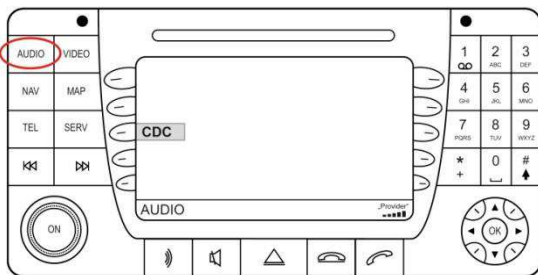


Fig. 80

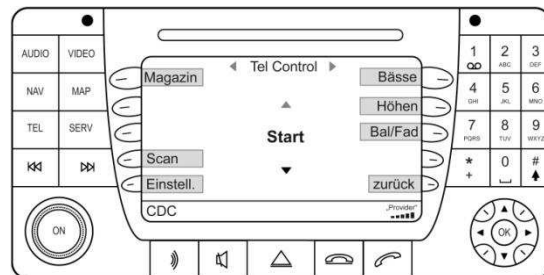


Fig. 81

### A2DP selection for radio „Audio 50“

**AUDIO > CD > MAGAZIN > CD 6** (Fig. 82-84).

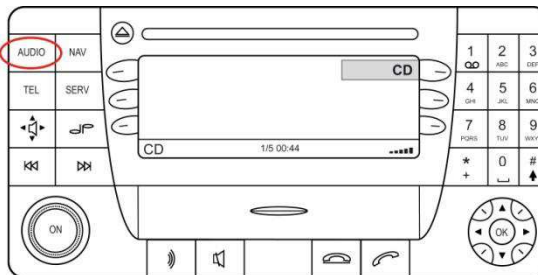


Fig. 82

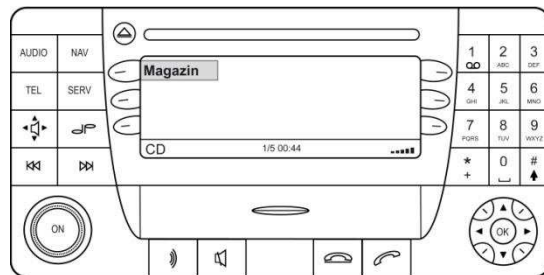


Fig. 83

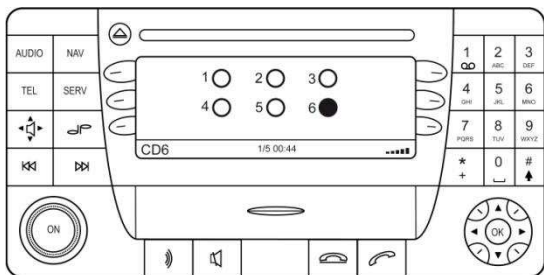


Fig. 84

### Operation Audio 50:

Track 1 – STOP

Track 2 – FORWARD

Track 3 – BACK

Track 4 – START

## SMS Text message

**NOTE:** The mobile phone must support text msg sync via Bluetooth to use this feature. The number of text messages is limited to 90 messages.

In some cases the mobile phone does not support the single operations (Writing, Sending, Receiving).

Press the button **SERV > MAIL** for accessing- **INBOX, OUTBOX, DRAFT** (Fig. 85-86).

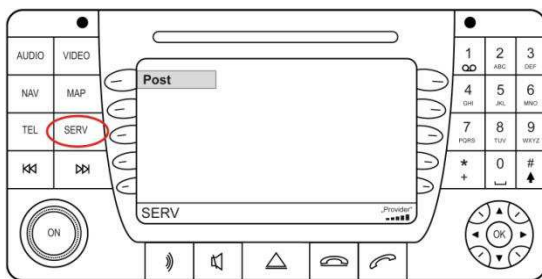


Fig. 85



Fig. 86

## Writing SMS Text message

By using the keypad short messages can be written as well as sent. Press the buttons **SERV > MAIL > NEW** (Fig. 87).

Enter the number or select an entry of the **PHONE BOOK** (Fig. 88).



Fig. 87

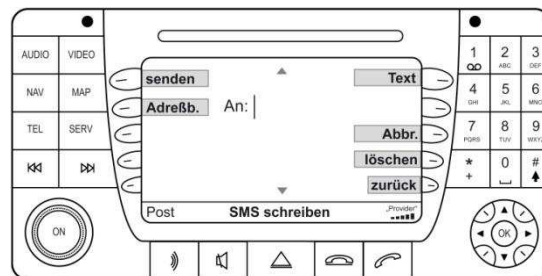


Fig. 88

Enter the message by using the keypad and press the button **SEND** (Fig. 89).



Fig. 89

It is not possible to delete text messages by using the buttons of the head unit.

## Setup through head unit

### Setup processing


1. Pair up your Bluetooth phone with the hands free as usual
2. Use the following setup - Code: **25822XXYY**
3. Please see the table below for the values **XX** as well as **YY**
4. After entering the code please press **DIAL**  (Fig. 91)



Fig. 90

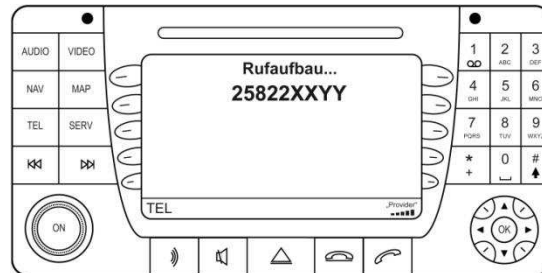


Fig. 91

| Function   | XX | YY     | Example   |
|--|----|--------|-----------|
| Volume Telephone   | 10 | (0-15) | 258221009 |
| Volume ring tone   | 11 | (0-15) | 258221112 |
| A2DP activation  | 40 | 01     | 258224001 |
| A2DP deactivation  | 40 | 00     | 258224000 |
| Microphone adjustment                                    | 14 | (0-15) | 258221409 |
| Hardware Reset   | 21 | 77     | 258222177 |
| Software Update  | 20 | 25     | 258222025 |
| Reset protocol only at Mercedes                          | 80 | 00     | 258228000 |
| In case of problems during call set-up, except for SL230 | 80 | 01     | 258228001 |
| Protocol conversion for SL 230                           | 80 | 02     | 258228002 |

**NOTE:** The call will be answered with “The number does not exist” but the setup has been completed.

After proceeding the Setup  **Vehicle system needs to shut down.**

**NOTE:** As soon as the display of the instrument cluster disappears the vehicle system shut down.

 **Restart radio.**

---

## FAQ

Why does the phonebook not pop up in the screen?

- *Your Bluetooth phone doesn't support phonebook sync.*
- *Phonebooks that have a large number of entries can take quite a long time to synchronise.*

I'm not able to pair my Bluetooth phone.

- *You already paired up 5 different mobile phones. At least one mobile has to be deleted of the Bluetooth device list*

I'm not able to use A2DP

- *A2DP function has to be activated before using.*
- *Your Bluetooth phone doesn't support A2DP*

## FAQ – Online

<http://www.kufatec.de/faq/public.pl?Action=PublicFAQ&Subaction=Explorer&CategoryID=1>